

A new species of the spider genus *Craspedisia* from the Gaoligong Mountains, Yunnan, China (Araneae, Theridiidae)

Chang-Min Yin¹, Charles E. Griswold², You-Hui Bao¹ and Xiang Xu¹

¹College of Life Science, Hunan Normal University, Changsha, Hunan Province 410081, P. R. China

²California Academy of Sciences, San Francisco, California 94118, USA

Summary

Craspedisia longioembolia, new species, is described from the Gaoligong Mountains, Yunnan Province, China. This is the first *Craspedisia* species discovered in China.

Introduction

At present, only two species of *Craspedisia* are known, both from tropical America (Platnick, 2002). They are *Craspedisia cornuta* (Keyserling, 1891) and *C. spatulata* Bryant, 1948. The new species, *Craspedisia longioembolia*, new species, is the first *Craspedisia* to be discovered in China. Its placement in *Craspedisia* is suggested by the projection on the male clypeus (Fig. 2), large colulus, chelicerae with a tooth on the anterior margin and a sclerotised ring around the abdominal pedicel (Levi & Levi, 1962; Levi, 1963). It was discovered in montane conifer-hardwood forest by members of

the 2nd Sino-American Gaoligongshan Expedition in July 2002.

All measurements are in mm. Abbreviations for eyes and eye region are standard for the Araneae.

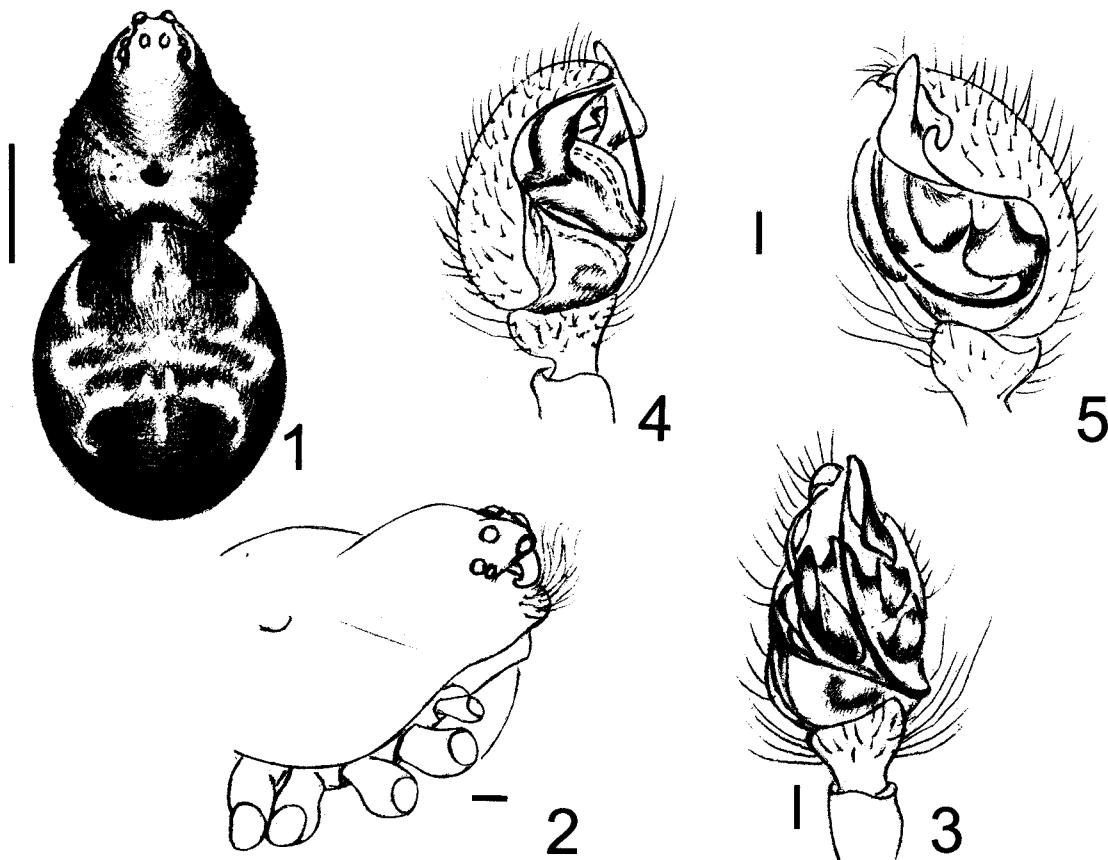
***Craspedisia longioembolia*, new species (Figs. 1–5)**

Type: Holotype ♂ from 2775 m elevation in the Gaoligongshan (Gaoligong Mountains) near No. 12 Bridge Camp area, Nujiang State Nature Reserve, 16.3 air km W of Gongshan, 27°43'N, 98°30'E, Nujiang Prefecture, Yunnan Province, China, 15–19 July 2000, coll. H.-M. Yan, D. Kavanaugh, C. E. Griswold, H.-B. Liang, D. Ubick and D.-Z. Dong. Deposited in the College of Life Science, Hunan Normal University (No. 00-QD-30).

Etymology: The specific name is an arbitrary combination of letters.

Diagnosis: *Craspedisia longioembolia*, new species, can be distinguished from both *C. cornuta* and *C. spatulata* by having the embolus long and slender, with a sharp apex, whereas the emboli of *C. cornuta* and *C. spatulata* are short and thick, with blunt apices (Levi, 1963: figs. 31, 33).

Male (holotype): Carapace longer than wide, black-brown, surface rough with numerous small ridges and spiculae and laterally fringed with spiculae (Fig. 1). Cervical groove deep, caput elevated (Fig. 2). Median ocular quadrangle protruding anteriorly. Clypeus with



Figs. 1–5: *Craspedisia longioembolia*, new species, holotype male. **1** Habitus, dorsal; **2** Carapace, oblique lateral; **3–5** Left palpal organ. **3** Ventral; **4** Prolateral; **5** Retrolateral. Scale lines=0.65 mm (1), 0.15 mm (2), 0.1 mm (3–5).

projection, appearing nose-like in lateral view (Fig. 2). Both eye rows recurved, AER more strongly (Fig. 1). ALE and PLE contiguous. Fovea longitudinal, depressed deeply, radial grooves darker. Sternum, chelicerae, endites and labium red-brown, with black-brown margins. Sternum with tubercles and covered with long ciliated black hairs. Chelicera with one promarginal tooth. Palpi and legs red-brown except femora brown, distal end of each patella with a strong seta. Abdomen ovoid, with broken sclerotised ring surrounding pedicel. Abdomen dorsum brown interrupted by white markings, resembling a type of facial make-up in the Beijing opera (Fig. 1), with two pairs of round, brown, muscular depressions in middle. Abdominal venter pale grey, except portion before epigastric groove and spinnerets brown. Colulus with two setae.

Measurements: Total length 3.18. Carapace length 1.60, width 1.11. Abdomen length 1.58, width 1.33. Eye sizes and intervals: AME 0.16, ALE 0.11, PME 0.14, PLE 0.17; AME-AME=ALE-ALE=0.11, PME-PME=PME-PLE=0.14; median ocular quadrangle length=width=0.37; clypeus height 0.36. Leg measurements (femur+(patella+tibia)+metatarsus+tarsus=total): I: 1.24+1.40+0.84+0.42=3.90; II: 1.11+1.22+0.71+0.38=3.42; III: 0.91+0.93+0.53+0.34=2.71; IV: 1.04+1.14+0.68+0.36=3.22. Leg formula I, II, IV, III.

Palpal organ (Figs. 3–5) with patella short, arched. Paracymbial hook on rim of cymbium. Median apophysis red-brown, conductor triangular, milk-white and membranous. From retrolateral view of left palpus, embolus beginning at lower right, turning clockwise and terminating on lower left, long and slender, with sharp apex.

Female: Unknown.

Distribution: Yunnan, China.

Material examined: Only the type.

Acknowledgements

Support for this research came from the China Natural History Project, the Foundation of Natural Science of the Education Department of Hunan Province (China), the California Academy of Sciences and the US National Science Foundation grant DEB BSI 074632456. We are grateful to Prof. Heng Li and Prof. Chun-lin Long for support for the 2000 Sino-American expedition to the Gaoligong Mountains and to Prof. Zhi-ling Dao for ably organising the expedition. We also thank all the collectors who did the difficult field-work and provided us with specimens. This is Scientific Contribution no. 24 from the California Academy of Sciences Center for Biodiversity Research and Information (CBRI) and contribution no. 17 from the China Natural History Project (CNHP).

References

- BRYANT, E. B. 1948: The spiders of Hispaniola. *Bull. Mus. comp. Zool. Harv.* **100**: 331–459.
- KEYSERLING, E. 1891: Brasilianische Spinnen. *Die Spinnen Amerikas* **3**: 1–278. Nürnberg.
- LEVI, H. W. & LEVI, L. R. 1962: The genera of the spider family Theridiidae. *Bull. Mus. comp. Zool. Harv.* **127**(1): 1–71.
- LEVI, H. W. 1963: The spider genera *Cerocida*, *Hetschkia*, *Wirada* and *Craspedisia* (Araneae: Theridiidae). *Psyche, Camb.* **70**(3): 177–179.
- PLATNICK, N. I. 2002: *The world spider catalog, version 2.5*. <<http://research.amnh.org/entomology/spiders/catalog81-87/index.html>>