

Short Communications

NOTES ON *FLABELLINA DANA* MILLEN AND HAMANN, 2006 FROM THE CARIBBEAN.— The description of the new aeolid *Flabellina dana* was published along with redescrptions of *F. verta* (Marcus, 1970) and *F. dushia* (Marcus and Marcus, 1967). Inadvertently, the plate of drawings depicting *Flabellina verta* (Fig. 3 in Millen and Hamann 2006) was duplicated for *Flabellina dana* in Fig. 5 (Millen and Hamann 2006). The correct illustrations for *Flabellina dana* appear here in Figure 1. In the previously published description, Figure 1D and Figure 2C, D refer to *Flabellina dana* as does all of the text including the figure caption for Figure 5.

In comparing *Flabellina dana*, illustrated in Fig. 1, with *F. verta*, shown in Millen and Hamann (2006, Fig.3) the following differences become apparent: The annulate rhinophores and more forward (interhepatic) position of the anus distinguish *Flabellina dana* (Fig. 1A) from *F. verta*. As illustrated in Fig. 1B, the oral tentacles are more slender in *F. dana*. The shape of the jaw is more rounded in *F. dana* (Fig. 1C), not as triangular as in *F. verta*; and there are more rows of denticles on the masticatory margin (maximum of 8 vs. 4). In Fig. 1D, it can be seen that compared to *F. verta*, the hermaphroditic ampulla is much smaller in *F. dana*, the duct to the receptaculum seminis is much shorter but the bursa copulatrix is much larger. The penis is tapering in *F. dana* and discoid in *F. verta*. In Fig. 1E, the lateral teeth of the radula are more incised at their bases and the denticles begin higher up in *F. dana*.

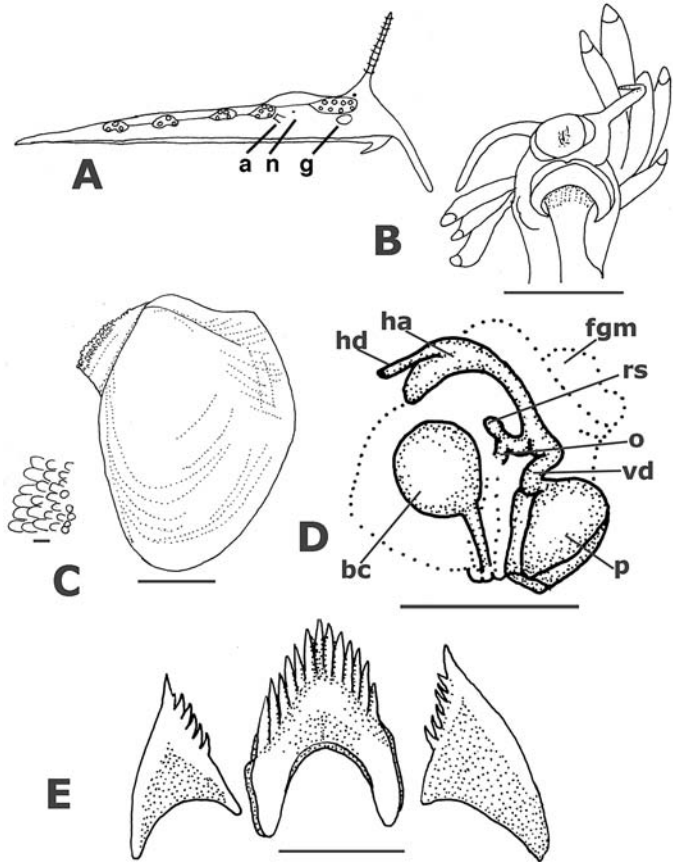


FIGURE 1. *Flabellina dana* Millen and Hamann, 2006. (St. Lucia). A. Right lateral view showing position of ceratal insertions. Key: a, anus; n, nephroproct; g, genital apertures. B. Ventral view of head and foot. Scale bar = 1 mm. C. One jaw plate, scale bar = 200 μ m and masticatory margin enlarged to show denticles, scale bar = 10 μ m. D. Reproductive system drawn using a camera lucida. Scale bar = 0.5 mm. Key: bc, bursa copulatrix; fgm, female gland mass; ha, hermaphroditic ampulla; hd, hermaphroditic duct; o, oviduct; p, penis; rs, receptaculum seminis; vd, vas deferens. E. One row of radular teeth. Scale bar = 25 μ m.

LITERATURE CITED

MILLEN, S.V., AND J.C. HAMANN. 2006. A new nudibranch species, genus *Flabellina* (Opisthobranchia:

Aeolidacea) from the Caribbean with Redescriptions of *F. verta* (Marcus, 1970), and *F. dushia* (Marcus and Marcus, 1963). *Proceedings of the California Academy of Sciences*, ser. 4, 57(30):925–936.

— **Sandra V. Millen**. *Department of Zoology, University of British Columbia, Vancouver, B.C., Canada, V6T 1Z4; Email: millen@zoology.ubc.ca.*