

Platnick, N. I. 1984. Studies on Malagasy spiders, 1. The family Gallieniellidae (Araneae, Gnaphosoidea). Am. Mus. Novit. 2801: 8-10. [Courtesy The American Museum of natural History].

Gallieniella blanci, new species

Figures 22-24

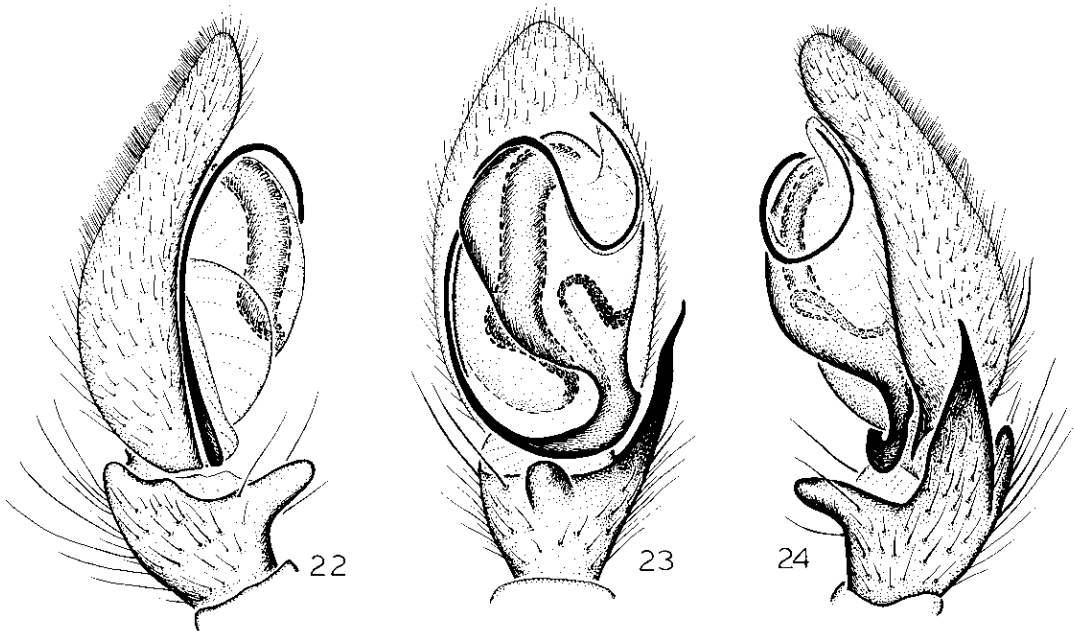
TYPE: Male holotype from "Sud Madagascar," presumably somewhere in Tuléar Province (December 1962; C. Blanc), deposited in MNHN.

ETYMOLOGY: The specific name is a patronym in honor of the collector of the holotype.

DIAGNOSIS: Males resemble those of *G. mygaloides* but can be distinguished by the

smaller dorsal tibial apophysis and the shorter terminal embolar coil (figs. 22-24).

MALE: As in *G. mygaloides*, except for the following. Total length, not including chelicerae, 3.38. Carapace 1.54 long, 1.35 wide, pars cephalica orangish brown, pars thoracica orange, darkened along posterior margin; surface with scattered recumbent white scales. From front, anterior eye row straight; eye sizes



FIGS. 22-24. *Gallieniella blanci*, new species. 22. Palp, prolateral view. 23. Palp, ventral view. 24. Palp, retrolateral view.

and interdistances: AME 0.05, ALE 0.07, PME 0.05, PLE 0.06; AME-AME 0.09, AME-ALE 0.02, PME-PME 0.12, PME-PLE 0.04, ALE-PLE 0.05; MOQ length 0.15, front width 0.19, back width 0.22. Clypeal height at AME 1.5 times their diameter. Chelicerae extending forward distance about three-fifths of carapace length, with short setae and white scales anteriorly; ventral tubercle of fang at about half its length; retromarginal teeth subequal. Leg spination: femora I-IV d1-0-0;

tibiae as in *G. mygaloides*. Femora yellowish orange, patellae, tibiae, and metatarsi orangish brown, tarsi light tan. Dorsum of abdomen with about six light hairline chevrons posteriorly. Dorsal tibial apophysis short, prolateral apophysis absent; terminal embolar coil and functional conductor shorter than in *G. mygaloides* (figs. 22-24).

FEMALE: Unknown.

OTHER MATERIAL EXAMINED: None.

DISTRIBUTION: Known only from southern Madagascar.