

Platnick, N. I. 1984. Studies on Malagasy spiders, 1. The family Gallieniellidae (Araneae, Gnaphosoidea). *Am. Mus. Novit.* 2801: 12-14. [Courtesy The American Museum of Natural History].

Legendrena angavokely, new species

Figures 33-36, 38-42

TYPE: Male holotype from Angavokely, Tananarive, Madagascar (February 21, 1967; R. Legendre), deposited in MNHN.

ETYMOLOGY: The specific name is a noun in apposition taken from the type locality.

DIAGNOSIS: Males can be recognized by the long, distally narrowed tibial apophysis (figs. 38-40), females by the relatively short epigynal ducts (figs. 41, 42).

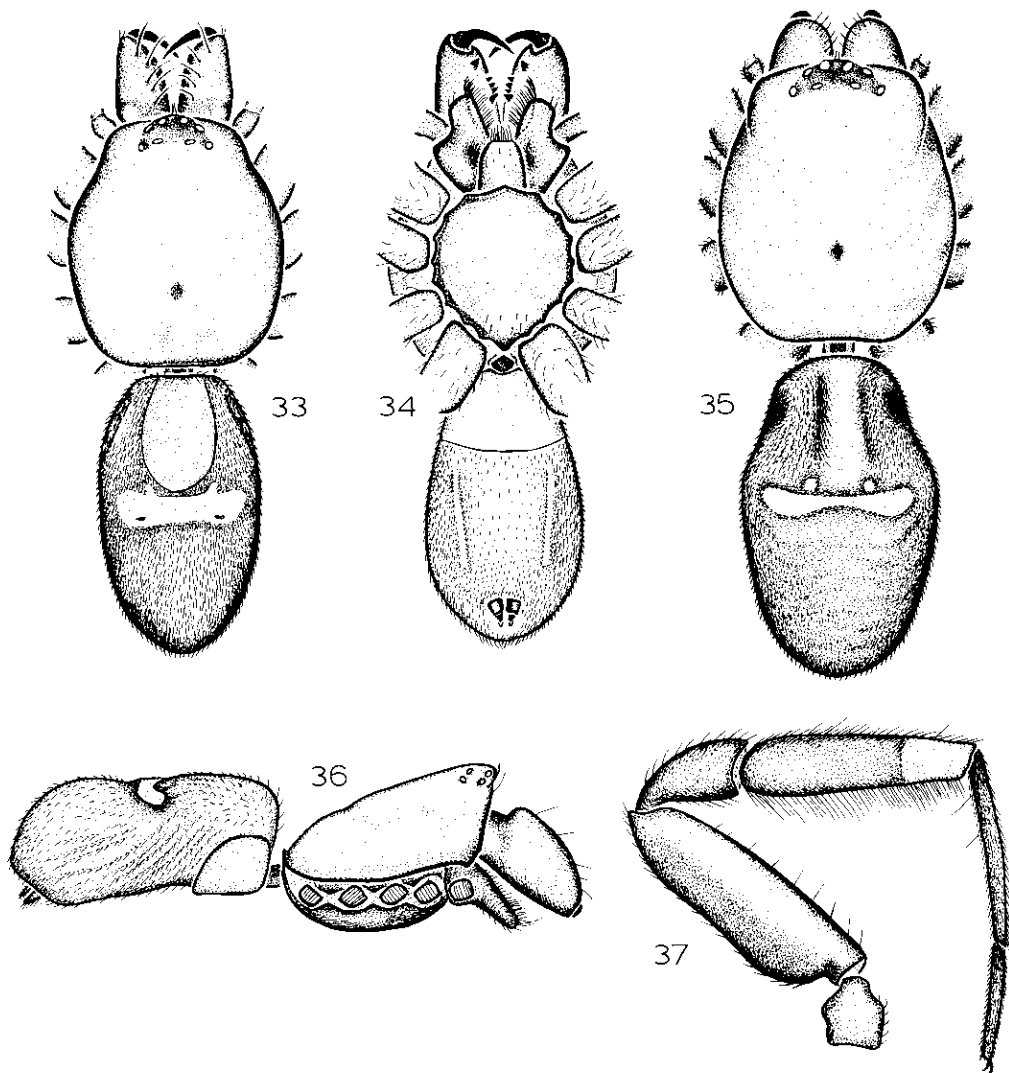
MALE: Total length, not including chelicerae, 2.99. Carapace 1.46 long, 1.19 wide, dark reddish brown. From above, both eye rows recurved; from front, anterior row slightly recurved, posterior row very slightly procurved; eye sizes and interdistances: AME 0.05, ALE 0.06, PME 0.05, PLE 0.06; AME-AME 0.09, AME-ALE 0.02, PME-PME 0.12, PME-PLE 0.06, ALE-PLE 0.05; MOQ length 0.17, front width 0.19, back width 0.22. Clypeal height at AME only slightly greater than their diameter. Chelicerae extending forward distance about three-eighths of carapace length; promargin with three closely spaced teeth, of which middle tooth is largest, retromargin with two widely separated subequal teeth. Labium as long as wide. Leg spination (only surfaces bearing spines listed): femora I-IV d1-0-0. Legs light brown, femora with prolateral and retrolateral dark brown stripes, patella I and proximal two-thirds of tibia I dark brown. Abdomen dark gray except for narrow transverse white dorsal band at about half its length, with scat-

tered iridescent scales and long dark setae; dorsal scutum extending almost half of abdominal length. Palpal tibia with single large distally narrowed dorsal apophysis; cymbium narrowed proximally (figs. 38-40).

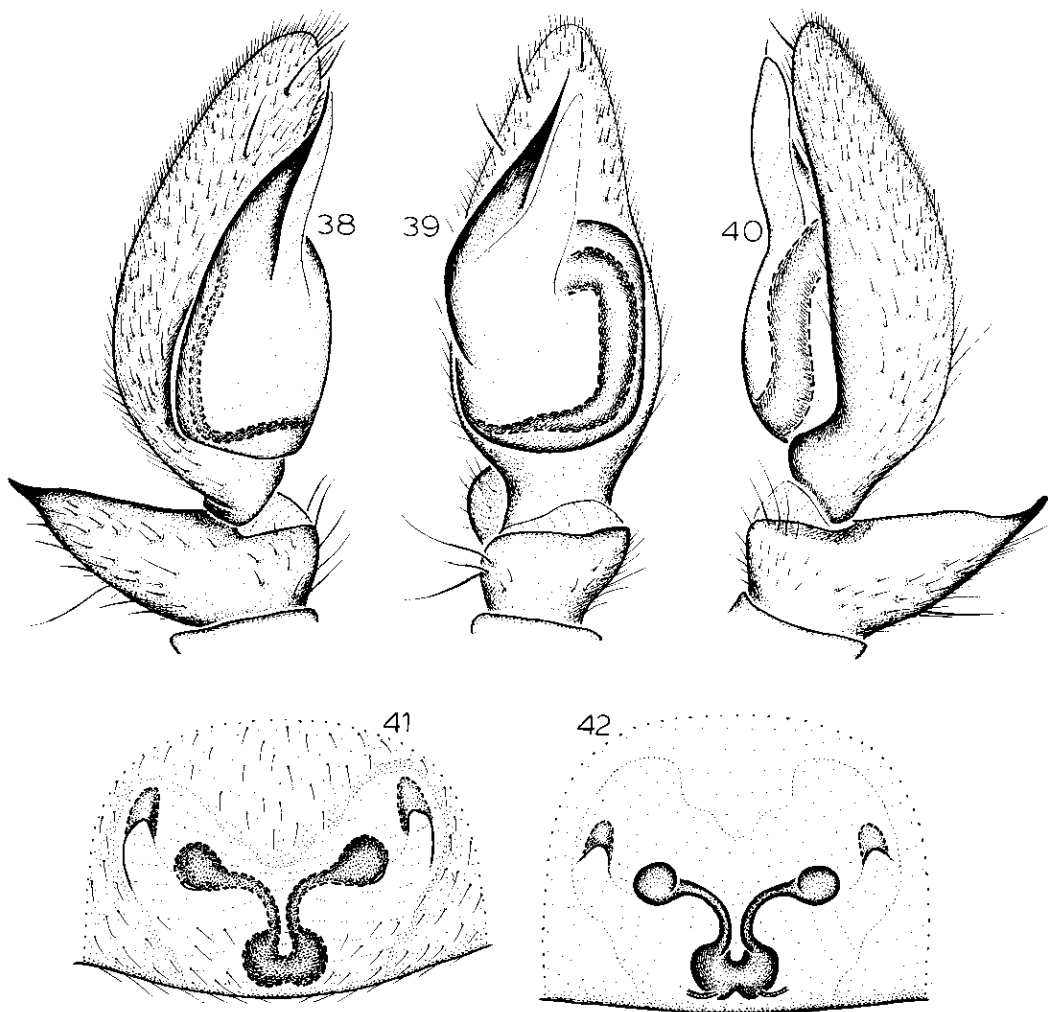
FEMALE: As in male, except for the following. Total length, not including chelicerae, 3.06. Carapace 1.57 long, 1.18 wide. Eye sizes and interdistances: AME 0.05, ALE 0.07, PME 0.05, PLE 0.08; AME-AME 0.09, AME-ALE 0.02, PME-PME 0.12, PME-PLE 0.06, ALE-PLE 0.05; MOQ length 0.18, front width 0.19, back width 0.22. Chelicerae extending forward distance about one-tenth of carapace length. Labium slightly longer than wide. Leg spination: femora: I d1-0-0, p0-0-1; II-IV d1-0-0. Abdominal scutum absent. Palpal femur with dorsal distal spine, patella with prolateral proximal and dorsal distal spines, tibia with prolateral proximal and dorsal median and distal spines, tarsus with prolateral proximal spine. Epigynum with anterolateral ledges invaginated (to receive tip of tibial apophysis?), ducts relatively short (figs. 41, 42).

OTHER MATERIAL EXAMINED: MADAGASCAR: *Tamatave:* Forêt de Didy, Andranonandevy, bushes, Mar. 1947 (J. Millot, MNHN), 2♀; same data (AMNH), 2♀; Forêt d'Analamazaotra, near Périnet railway station, Feb. 1967 (R. Legendre, MNHN), 1♀.

DISTRIBUTION: Known only from central and eastern Madagascar.



FIGS. 33-37. 33-36. *Legendrena angavokely*, new species, cephalothorax and abdomen. 37. *L. rolandi*, new species, leg I. 33, 34, 36, 37. Male. 35. Female. 33, 35. Dorsal view. 34. Ventral view. 36, 37. Lateral view.



FIGS. 38–42. *Legendrena angavokely*, new species. 38. Palp, prolateral view. 39. Palp, ventral view. 40. Palp, retrolateral view. 41. Epigynum, ventral view. 42. Epigynum, dorsal view.