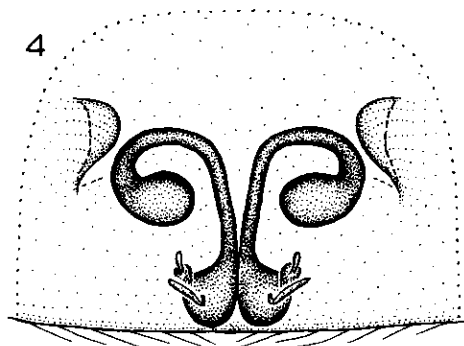
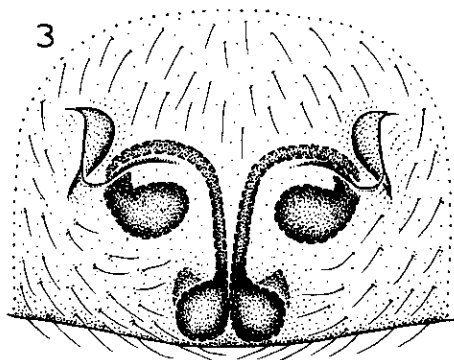


Platnick, N. I. 1995. New species and records of the ground spider family Gallieniellidae (Araneae, Gnaphosoidea) from Madagascar. *J. Arachnol.* 23: 10. [Courtesy The American Arachnological Society].



Figures 3-4. *Legendrena perinet* Platnick, epigynum: 3, ventral view; 4, dorsal view.

*Legendrena perinet* Platnick  
(Figs. 3, 4)

**Diagnosis.**—Females can be recognized easily by the anteriorly curled epigynal ducts (Figs. 3, 4).

**Female.**—Total length, not including chelicerae, 3.50. Carapace 1.84 long, 1.52 wide, light brown, without scales. From above, anterior eye row recurved, posterior row slightly recurved; from front, anterior row very slightly recurved, posterior row slightly procurved; eye sizes and interdistances: AME 0.06, ALE 0.09, PME 0.08, PLE 0.09; AME-AME 0.06, AME-ALE 0.01, PME-PME 0.11, PME-PLE 0.04, ALE-PLE 0.03; MOQ length 0.19, front width 0.18, back width 0.27. Clypeal height at AME only slightly greater than their diameter. Chelicerae extending forward distance greater than one-third of carapace length, bearing relatively short fang without ventral tubercle but slightly narrowed, lightened at

about one-third its length; three promarginal teeth closely spaced, middle one largest; two retro-marginal teeth enlarged, widely separated. Leg spination: femora I-IV d1-0-0. Femora, patellae, and tibiae light brown except distal half of tibia I and distal tip of tibiae III, IV lightened; metatarsi and tarsi light orange. Abdomen dark gray, dorsum unmarked, venter with two pale longitudinal stripes near sides. Palpal femur and more distal segments with dorsal spines grading into bristles, tibia and tarsus each with proximal prolateral spine as well. Epigynum with pair of anterolateral pockets (Fig. 3), ducts curling anteriorly (Fig. 4).

**New records.**—**MADAGASCAR.** *Fianarantsoa*: Ranomafana National Park, Apr. 1992, pitfall trap (V., B. Roth, CAS), 3♂♂; 200 m N research cabin, Ranomafana National Park, Mar. 25, 1992, in leaf litter (S. Kariko, V. Roth, MCZ), 1♂1♀.