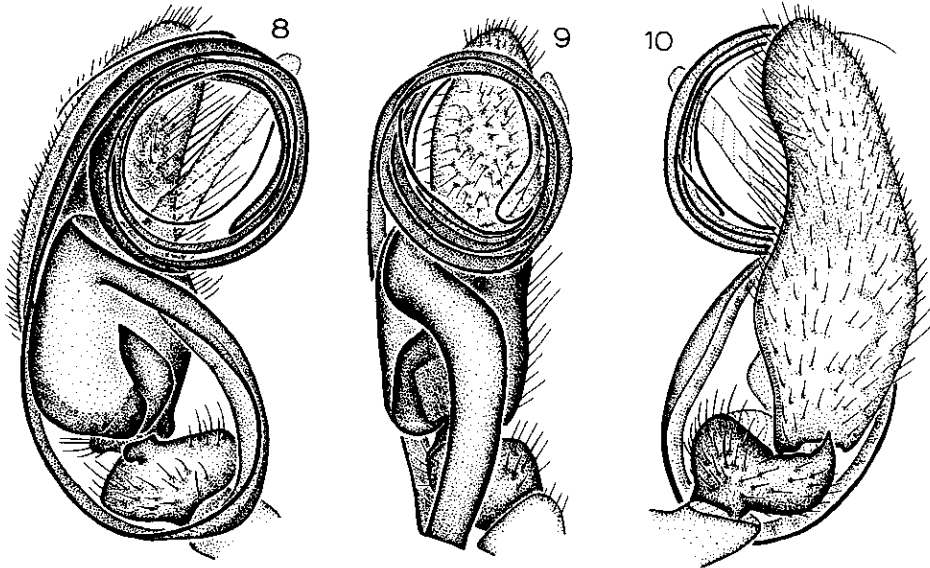


Platnick, N. I. 1995. New species and records of the ground spider family Gallieniellidae (Araneae, Gnaphosoidea) from Madagascar. *J. Arachnol.* 23: 11-12. [Courtesy The American Arachnological Society].



Figures 8–10.—*Legendrena spiralis* new species, left male palp: 8, pro-lateral view; 9, ventral view; 10, retro-lateral view.

***Legendrena spiralis* new species**  
(Figs. 8–10)

**Type.**—Male holotype taken on foliage along Namorona River, Ranomafana National Park, Fianarantsoa, Madagascar (May 18, 1992; B. Roth), deposited in CAS.

**Etymology.**—The specific name refers to the coiled embolus.

**Diagnosis.**—Males can easily be separated from those of the other known species by the distally coiled embolus (Figs. 8–10).

**Male.**—Total length, not including chelicerae, 3.89. Carapace 1.73 long, 1.46 wide, dark chestnut brown, without scales. From above, anterior eye row recurved, posterior row slightly recurved; from front, anterior row slightly recurved, posterior row almost straight; eye sizes and interdistances: AME 0.06, ALE 0.06, PME 0.08, PLE 0.07; AME-AME 0.05, AME-ALE 0.02, PME-PME 0.15, PME-PLE 0.06, ALE-PLE 0.07; MOQ length 0.19, front width 0.23, back width 0.25. Clypeal height at AME only slightly greater than their diameter. Chelicerae extending forward distance less than one-third of carapace

length, bearing relatively short fang without ventral tubercle but slightly narrowed, lightened at about half its length; three promarginal teeth closely spaced, middle one largest; two retro-marginal teeth widely separated but not enlarged. Leg spination: femora I–IV d1-0-0. Coxae and trochanters yellow, I–III with dark lateral stripes; femora dark gray, I with lateral light stripes along ventral half of sides, II, III with dorsal yellow longitudinal stripe; patella I dark gray, II, III yellow with lateral dark stripes, IV yellow proximally, dark gray distally; tibia I not incrassate or fringed, dark gray proximally, yellow distally, other tibiae dark orange with dark lateral longitudinal stripes; anterior metatarsi and tarsi light orange, posteriors yellow. Abdomen dark gray, dorsum without distinct scutum, with vaguely indicated transverse white stripe at about one-third its length. Palpal tibia with short, hook-shaped retrolateral tibial apophysis; embolus originating distally, broadened proximally, coiling at tip of cymbium (Figs. 8–10).

**Female.**—Unknown.

**Distribution.**—Known only from southeastern Madagascar.