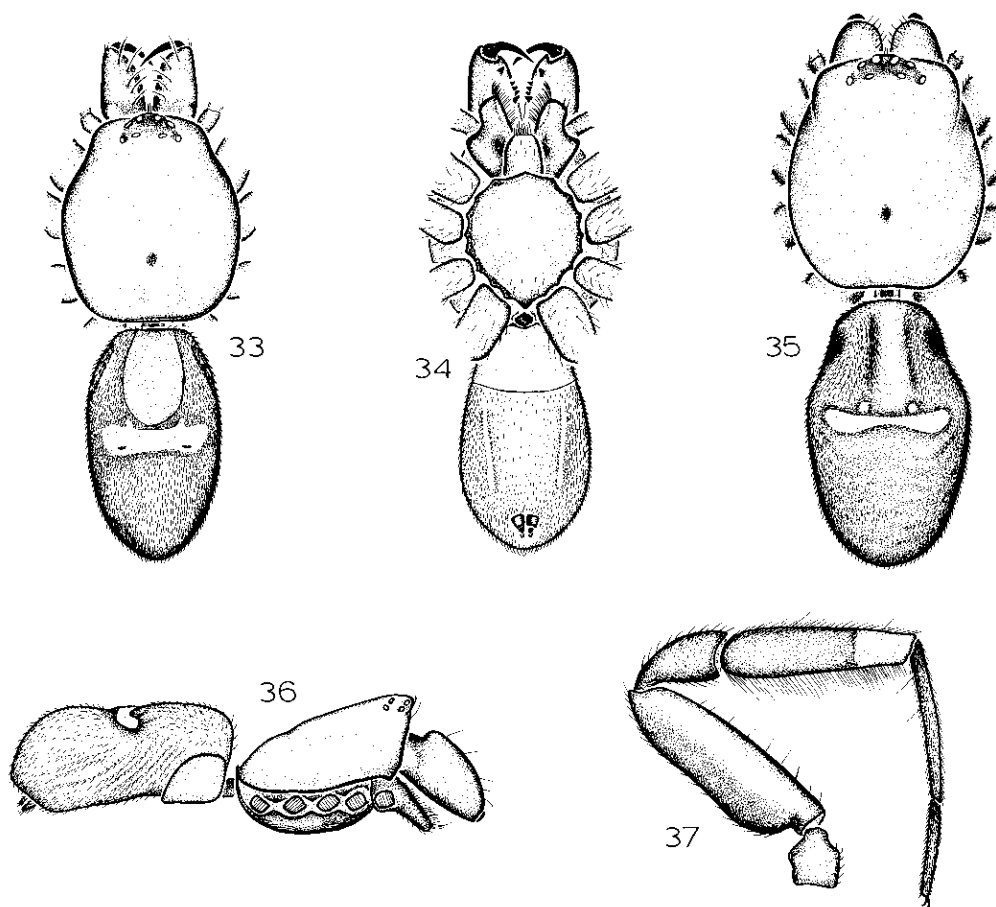


Platnick, N. I. 1984. Studies on Malagasy spiders, 1. The family Gallieniellidae (Araneae, Gnaphosoidea). *Am. Mus. Novit.* 2801: 14-16. [Courtesy The American Museum of Natural History].



FIGS. 33-37. 33-36. *Legendrena angavokely*, new species, cephalothorax and abdomen. 37. *L. rolandi*, new species, leg I. 33, 34, 36, 37. Male. 35. Female. 33, 35. Dorsal view. 34. Ventral view. 36, 37. Lateral view.

***Legendrena tamatave*, new species**

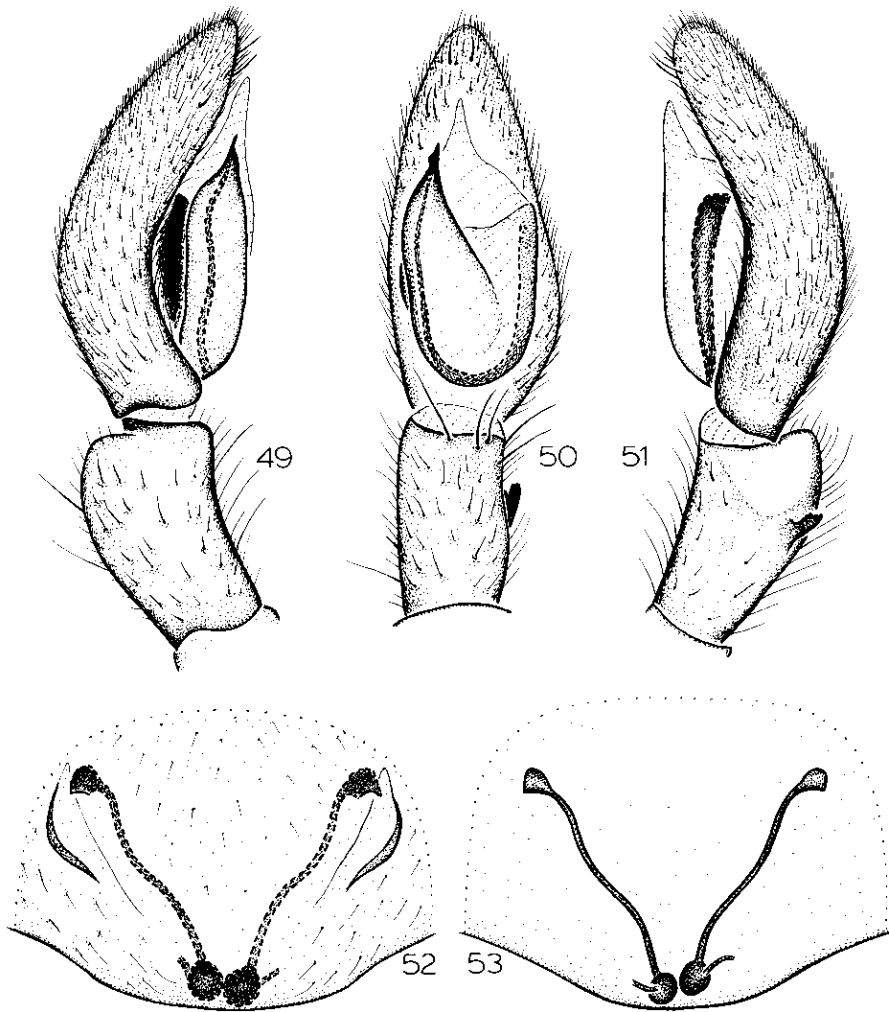
Figures 49-53

TYPE: Male holotype from the Forêt d'Analamazaotra, near the Périnet railway station, Tamatave, Madagascar (December 14, 1955; collector unknown), deposited in MNHN.

ETYMOLOGY: The specific name is a noun in apposition taken from the type locality.

DIAGNOSIS: Males can be recognized by the basally hooked tibial apophysis (figs. 50, 51), females by the relatively long epigynal ducts (figs. 52, 53).

MALE: As in *L. angavokely*, except for the following. Total length, not including chelicerae, 4.28. Carapace 2.14 long, 1.62 wide. From front, anterior eye row straight; eye sizes and interdistances: AME 0.05, ALE 0.09, PME 0.06, PLE 0.09; AME-AME 0.10, AME-ALE 0.04, PME-PME 0.19, PME-PLE 0.09, ALE-PLE 0.05; MOQ length 0.20, front width 0.13, back width 0.31. Clypeal height at AME twice their diameter. Chelicerae extending forward distance about one-third of carapace length, distal one-third flattened lat-



FIGS. 49-53. *Legendrena tamatave*, new species. 49. Palp, prolateral view. 50. Palp, ventral view. 51. Palp, retrolateral view. 52. Epigynum, ventral view. 53. Epigynum, dorsal view.

erally, where bordered by short setae on elevated bases. Labium longer than wide. Leg spination: femora III, IV d1-0-0. Transverse white band on abdominal dorsum interrupted at center. Palpal tibia with small basally hooked dorsal apophysis; cymbium greatly narrowed proximally, embolus apically hooked (figs. 49-51).

FEMALE: As in *L. angavokely*, except for the following. Total length, not including chelicerae, 3.47 (but abdomen shriveled). Carapace 1.92 long, 1.44 wide. Eye sizes and interdistances: AME 0.05, ALE 0.07, PME 0.05, PLE 0.09; AME-AME 0.13, AME-ALE 0.04, PME-PME 0.17, PME-PL

PLE 0.06; MOQ length 0.17, front width 0.22, back width 0.27. Clypeal height at AME 1.5 times their diameter. Chelicerae extending forward distance about one-sixth of carapace length. Labium wider than long. Leg spination as in *L. angavokely*. Transverse white band on abdominal dorsum interrupted at middle. Palpal tarsus with additional dorsal proximal spine. Epigynum with long lateral ledges and long ducts (figs. 52, 53).

OTHER MATERIAL EXAMINED: MADAGASCAR: *Tamatave*: Forêt d'Analamazotra, near Périnet railway station, Feb. 1, 1958 (J. Lepointe, MNHN), 1♀.

DISTRIBUTION: Known only from eastern Madagascar.