

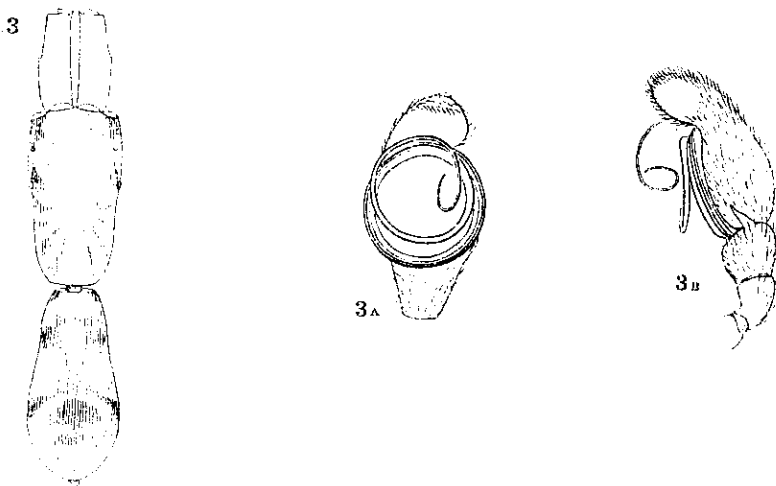
Peckham, G. W. & E. G. Peckham. 1892. Ant-like spiders of the family Attidae. Occ. Pap. nat. Hist. Soc. Wiscons. 2(1): 25-26.

*Myramarachne electrica* (Peckham & Peckham, 1892)

SALTICUS ELECTRICUS N. SP.

Pl. I., Fig. 3, male ; 3a and 3b, male palpus.

♂. Total length, 5.3 mm. Falces, 1.6 mm.



Cephalothorax: Length, 2.6 mm.; width, 1.4 mm.  
Legs, 4132; femur of first enlarged, 4 and 1 nearly equal.

Tibia I with five pairs, and metatarsus I with two pairs of long slender spines.

Cephalothorax moderately high, with a very slight constriction. Cephalic part a little higher than thoracic. Quad-rangle of eyes very little wider than long, a little wider behind than in front, occupying about two-fifths of cephalothorax.

Anterior eyes in a straight row, subtouching; middle barely twice as large as lateral. Second row nearer first than third row. Clypeus only a line. Falces horizontal, robust and flattened above; the outer edges have, about in the middle, a notch and a slight projection; looked at from the side they are slightly thickened near the proximal end. Lip a little longer than wide. Coxæ 1 separated by width of lip. Sternum long, oval. Pedicle not visible from above. Abdomen cylindrical, with a constriction in front of middle. Tibia of palpus but little more than one-third as long as tarsus.

*Color.* Cephalothorax dark reddish-brown, excepting the interocular area, which is yellow. Abdomen, in front of the constriction, dark brown; behind it, pale yellowish, with a brown spot above. There are two dark rings around the abdomen, one in front of, and one behind, the constriction. Legs, falces, palpi and under surface medium brown.

*Habitat.* Madagascar.

The yellowish color of this species distinguishes it from simplex and augustus, which are very dark brown or black. It is, moreover, a much smaller, more delicate spider than simplex. The tibia of the palpus in electricus is but little more than one-third as long as tarsus, while in augustus it is two-thirds as long.