

Peckham, G. W. & E. G. Peckham. 1892. Ant-like spiders of the family Attidae. Occ. Pap. nat. Hist. Soc. Wiscons. 2(1): 23-24.

Myrmarachne simplexella Roewer, 1951 [*]

SALTICUS SIMPLEX N. SP.

Pl. I., Fig. 4, male; 4a, 4b and 4c, male palpus.

♂. Total length, 7 mm. Falces, 2.1 mm.

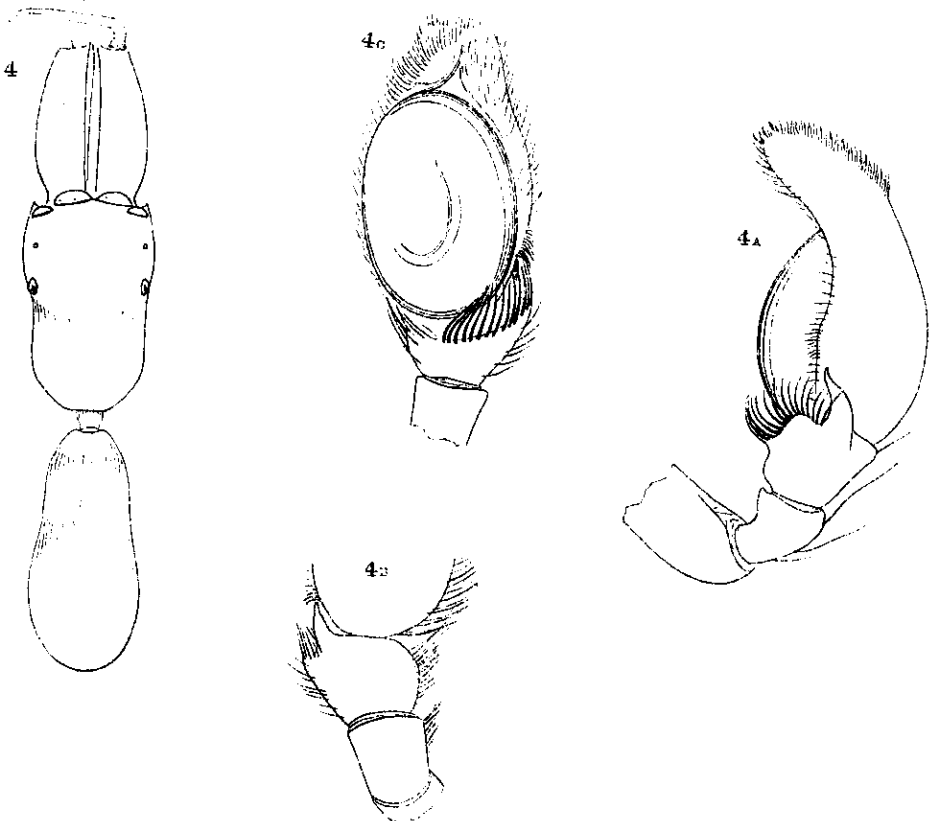
Cephalothorax: Length, 4 mm; width, 2 mm.

Legs, 4132, about equally stout.

1st leg longer than 2d by tarsus, metatarsus and one-third of tibia.

4th leg longer than 3d by tarsus and metatarsus.

Cephalothorax rather high, the thoracic part sloping off in all directions from the dorsal eyes. Quadrangle of eyes one-fourth wider than long, much wider behind than in front,



occupying two-fifths of cephalothorax. Anterior eyes in a straight row, subtouching; middle twice as large as lateral. Clypeus only a line. Second row a little nearer the first than the third row. Falces moderately long, horizontal, parallel, very robust, flattened above and on inner faces, much thickened on the outer sides, thickest in the middle; looked at from the side they appear semi-circular. Fang as long as falx. Lip much longer than wide; maxillæ very long, excavated within. Coxæ 1 separated by nearly the width of the lip. Sternum narrow, contracted behind. Pedicle not visible from above. Abdomen cylindrical, with a scarcely perceptible constriction near the anterior end. Integument of abdomen hardened. Tibia of palpus barely one-third as long as tarsus.

Color. Cephalothorax black, with some whitish hairs around the eyes of the first row, and a band of orange-colored hairs behind the dorsal eyes. Abdomen black, covered with long, orange hairs. Legs with femoral joints blackish, except those of the second, which are paler underneath, and the other joints black, mingled with pale testaceous. Palpi and falces dark brown. Under surface dark brown, except the coxæ of the first, second and fourth pairs of legs, which are pale.

Habitat. Madagascar.

The greater size of simplex distinguishes it from both *augustus* and *electricus*. It is also separated from *electricus* by its dark color, and from *augustus* by the relative length of the tibia and tarsus of the palpus.

[*] *Myrmarachne simplexella* Roewer, 1951: 450. Nom. nov. pro *Salticus simplex* Peckham and Peckham, *praeocc.*, Blackwall 1865.