

Peckham, G. W. & E. G. Peckham. 1894. Spiders of the *Marptusa* group. Occ. Pap. nat. Hist. Soc. Wiscons. 2: 130-132.

PADILLA ARMATA SP. NOV.

Plate XIII., Figs. 1—1*h*.

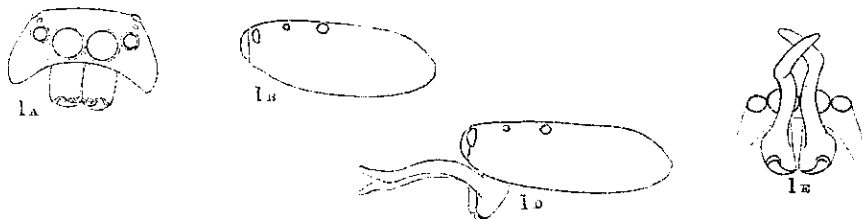
♂. Length, 6. Length of cephalothorax, 3; width of cephalothorax, 1.8. Horn, 1.6.

Legs, 1423; first pair much the longest and much the stoutest.

♀. Length, 6.5. Length of cephalothorax, 2.3; width of cephalothorax, 1.8.

Legs, 1423; first pair longest and plainly stoutest.

The abdomen is rather wide and heavy for the size of the spider. The maxillæ are broad and obtusely rounded. The labium is about as wide as long. The falces are short, vertical and parallel; the sternum is oval. The femur, patella and tibia of the first leg are much thickened in both sexes—the femur especially being short and heavy. In the male the femur of the second leg is also somewhat thickened. The male has projecting forward from the upper part of the falces a pair of horns, which first curve inward and then outward, and near the distal end are sharply bent, so that the tips cross each other.



1*a*, face and falces of female; 1*b*, side view of cephalothorax of female; 1*d*, side of cephalothorax of male, showing horns; 1*e*, falces of male, from below

In the female the entire cephalothorax is covered with white hairs; there is a pair of black spots on the cephalic part, which are only visible when the hairs are rubbed off. The face is covered with long, white hairs. The abdomen is also white and has two longitudinal rows of dark brown spots throughout the length of the dorsum. Close to the spinnerets these spots join each other, forming two or three chevrons. In the male the cephalothorax has a wide white band on each side and one down the middle, the rest of the surface being covered with reddish-yellow hairs which grow thickly around the anterior eyes. The narrow clypeus is covered with short, stiff, white hairs. The abdomen, in our single male, has the hairs nearly all rubbed off. It seems to have been much like that of the female, except that the general color of the integument is darker and that the dark spots seem to have been separated by yellow, instead of by white, hairs. The falces and horns are dark brown. The first and second legs in the male are dark brown above and black beneath, with a good many short, white hairs. The third and fourth, like all the legs in the female, are yellowish, with black spines. The palpus in the male is black with some white hairs. In the female it is paler than the legs.

This species, of which we have one male and several females, from Madagascar, is much like *Padilla cornuta* in the shape of the cephalothorax and in the thickening of the first legs. In *cornuta*, however, the abdomen is much more slender and graceful and is marked with longitudinal bands instead of with spots; and the horns are almost straight, while in *armata* they have a double curve.

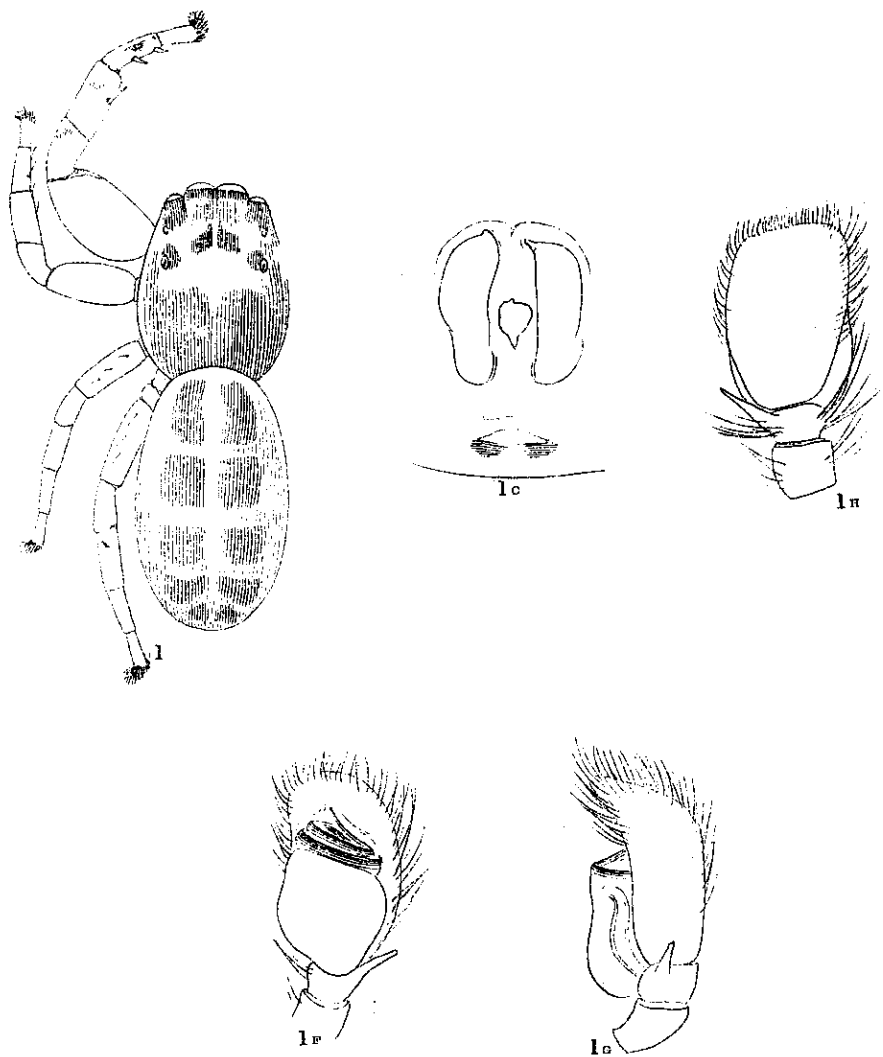


Fig. 1, *Padilla armata*, dorsal view of female, x 8; 1a, face and falces of female; 1b, side view of cephalothorax of female; 1c, epigynum; 1d, side of cephalothorax of male, showing horns; 1e, falces of male, from below; 1f, 1g and 1h, male palpus.