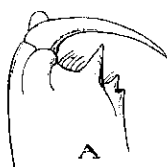


Simon, E. 1902. Etudes arachnologiques. 31e Mémoire. LI.  
 Descriptions d'espèces nouvelles de la famille des Salticidae (suite).  
 Ann. Soc. ent. Fr. 71: 405.

**Pharacocerus** (1) *sensor*, sp. nov. — ♂ long. 6-7 mill. — Cephalothorax (depilis) fusco-castaneus, antice paulo dilutior sed prope oculos niger. Pili oculorum pauci, fulvi vel lutei. Clypeus nudus. Abdomen breve, depressiusculum, postice acuminatum, supra crebre luteo-roseo vel albido-pubescent et parce hirsutum, sed macula maxima nigro-velutina, longe rhomboidali, postice abrupte angustiore et truncata, ornatum, subtus obscure fulvum, albido-luteo-pilosum. Chelae fusco-castaneae, glabrae, subtiliter striatae, cylindraceae et leviter divaricatae, ad apicem, supra radicem unguis, tuberculo obtuso brevi et infra directo, subtus, sub unguis, tuberculo obtuso vel costa arcuata instructae, margine superiore dentibus binis medioeribus et remotis sed inter se subgeminatis, 1<sup>o</sup> 2<sup>o</sup> majore, margine inferiore dente maximo et acuto, instructis. Sternum coxaeque pallide fusco-rufula. Partes oris pedesque quatuor antici fusco-castanei, femoribus nigris, metatarsis difutioribus, tarsis luteis, pedes quatuor postici dilutiores, cuncti parce et longe hirsuti, tibiis supra maculis parvis albido-pilosis biseriatis 2-2 ornatis. Pedes-maxillares parum robusti, sat longi, fusco-castanei, tibia tarsoque nigris; tibia patella paulo brevior et angustior sed longior quam latior, apophysi antice directa sat longa, in parte apicali angusta et leviter divaricata, extus armata; tarso sat breviter ovato; bulbo simplici, disciformi, subrotundo.

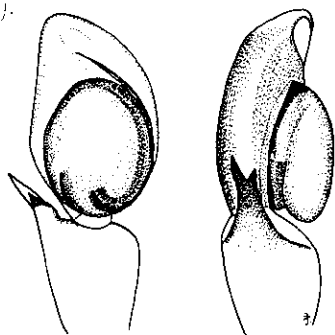
Madagascar : Ste-Marie (*Mocquerys*).



A. *Pharacocerus sensor* E. Simon.

Chélicère en dessous ♂.

[Simon, E. 1903. Histoire naturelle des araignées. Paris, 2: 726].



[From Proszynski, J. 2003. Salticidae of the world. Museum and Institute of Zoology, Polish Academy of Sciences, online at <http://salticidae.org/salticid/diagnost/title-pg.htm>].

With Author's permission. Copyright for the page by Jerzy Proszynski, 1999.

(1) **Pharacocerus**, nov. gen. — A *Pleripipo* imprimis differt metatarsis posticis verticillo aculeorum basali ex aculeis quatuor, lateralibus 2 inferioribus 2, a *Pseudamycio* et *Artabro* differt metatarsis 2<sup>o</sup> parvis aculeo laterali apicali munitis. — Typus : *P. sensor* E. Simon.