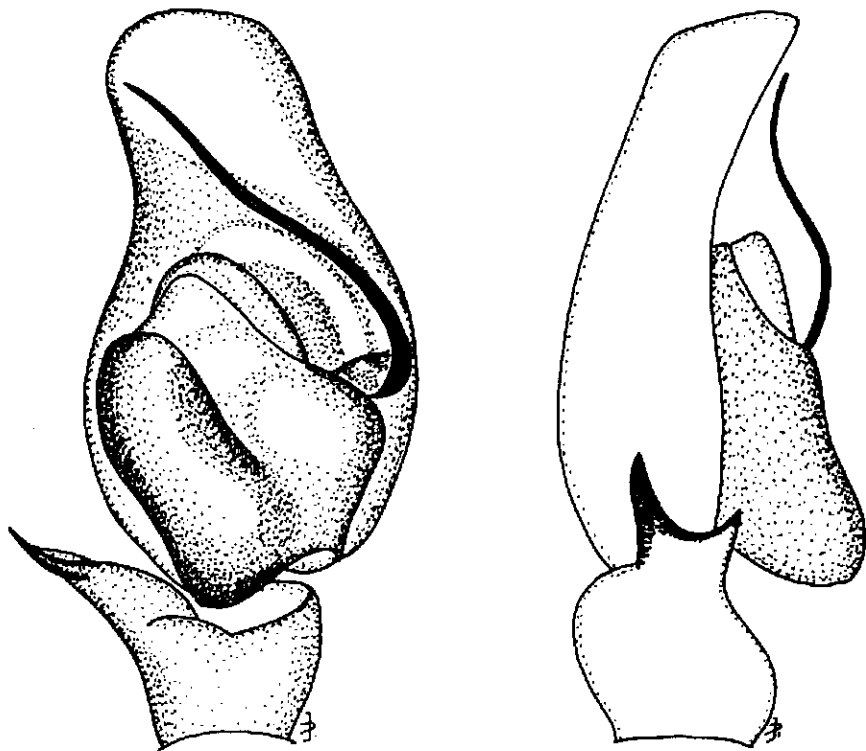


Simon, E. 1902. Etudes arachnologiques. 31e Mémoire. LI.  
Descriptions d'espèces nouvelles de la famille des Salticidae (suite).  
Ann. Soc. ent. Fr. 71: 398-399.

**Poessa** (1) **argenteo-frenata**, sp. nov. — ♂ long. 4,5 mill. — Cephalothorax laevis, parte cephalica nigro-nitida utrinque fulvo-rufulo-pilosa et inter oculos macula albo-pilosa ornata, thoracica castanea antice vitta lata semicirculari dilutiore lineaque marginali angustiore albo-pilosis notata. Pili oculorum laete rubri. Clypeus angustus, ad marginem vitta angusta crebre niveo-barbata marginatus. Abdomen nigrum, supra fulvo-olivaceo-pubescentis et viltis binis integris et parallelis laete albo-argenteo-squamulatis, decoratum, subtus parce cinereo-pilosum. Chelae laeves, nitidae et glabrae, nigrae apice rufulae. Partes oris sternumque castanea, parce albo-pilosa, laminae extus minute dentatae. Pedes I<sup>i</sup> paris nigro-castanei, femore patella tibiaque supra dilutioribus et subvittatis, metatarsis tarsisque luteis. Reliqui pedes lutei, coxis femoribusque obscurioribus, utrinque fere nigris. Pedes-maxillares fusci, albo-pilosi et hirsuti; tibia patella brevioris, extus ad apicem apophysii acuta oblique divaricata armata; tarso ovato, apice longe attenuato; bulbo ad basin obtuse producto, apice late et oblique secto, stylo valde curvato munito.

Madagascar : Tamatave (*Camboué*).

(1) **Poessa**, nov. gen. — A *Viciria* praesertim differt pedibus quatuor posticis inter se subaequalibus, tibia 3<sup>a</sup> paris teretriuscula. — Typus : *P. argenteo-frenata* E. Simon.



"19980 *Poessa argenteofrenata* ES. Tanalave" "Type ? M.E. Gallano"  
Coll. Simon, MNHN-Paris. Drawn by J.Prószyński, 21.VI.1985.

[From Prószyński, J. 2003. Salticidae of the world. Museum and Institute of Zoology, Polish Academy of Sciences, online at <http://salticidae.org/salticid/diagnost/title-pg.htm>].

With Author's permission. Copyright for the page by Jerzy Prószyński, 1999.