

*Phoroncidia aurata*, sp. n. (Pl. VII. fig. 9).

Adult female, length  $2\frac{1}{2}$  lines, breadth of abdomen nearly 2 lines.

The *cephalothorax* is round-oval and tolerably convex above, the caput elevated and produced in a somewhat bent form, the occipital portion being rather gibbous; consequently the clypeus is high, deeply impressed in the middle, and prominent at its lower margin. The colour of the cephalothorax, as well as of the rest of the fore part, is a bright orange-red-brown; the greater part, however, of the legs of the fourth pair is strongly suffused with black.

The *eyes* are placed in a tolerably compact group of four pairs at the extremity of the caput; the fore and hind central pairs form nearly a square, whose longitudinal is rather greater than its transverse diameter; those of each lateral pair are placed in almost a straight line with the fore central eye on its side; the laterals and fore centrals thus form a semicircular line; the latter are the largest of the eight, and the laterals the smallest.

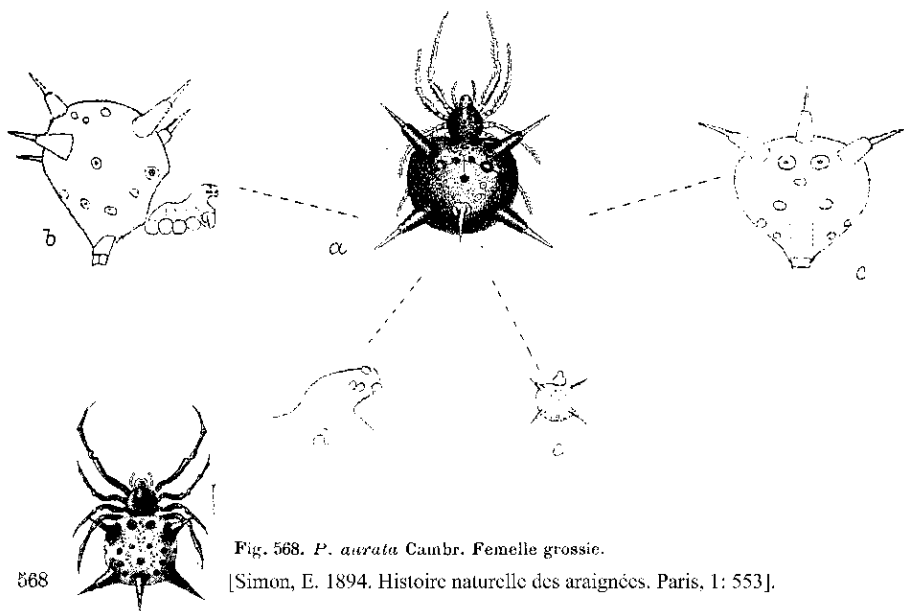


Fig. 568. *P. aurata* Cambr. Femelle grossie.

[Simon, E. 1894. Histoire naturelle des araignées. Paris, 1: 553].